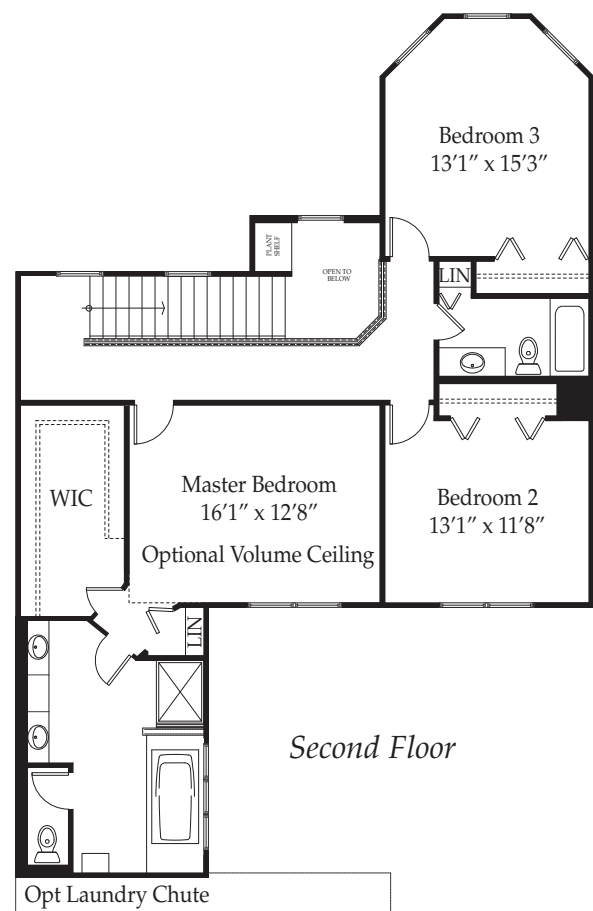
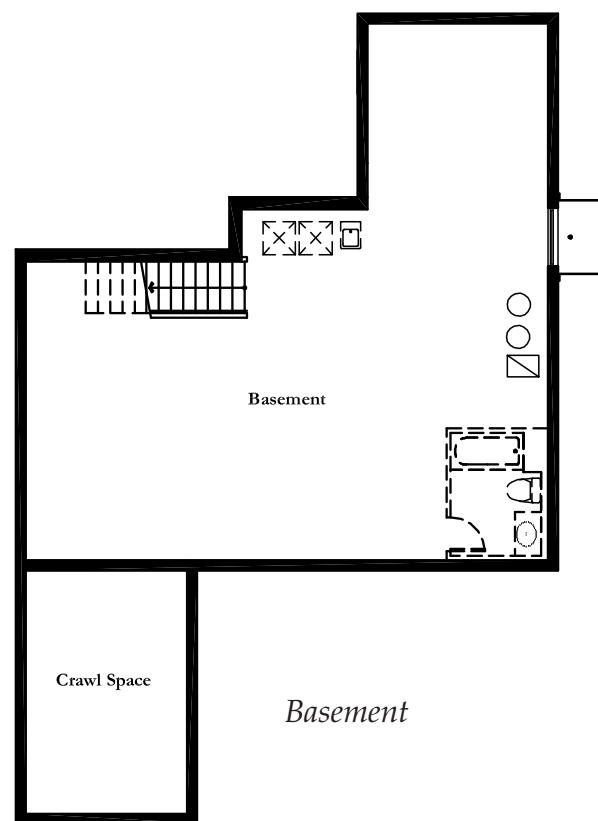


First Floor



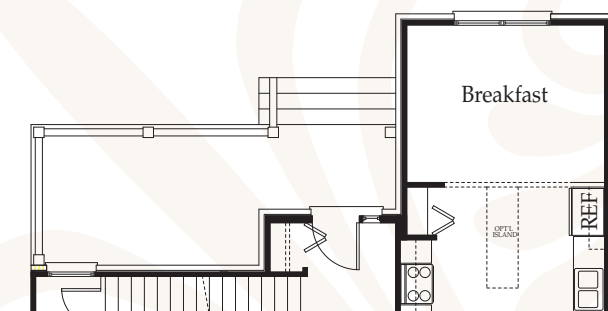
Second Floor



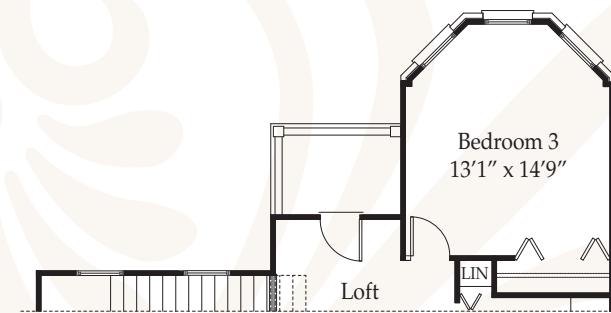
Basement

# The Berkshire

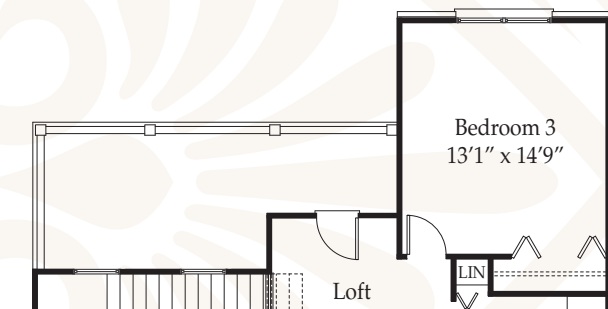
West Point Possibilities



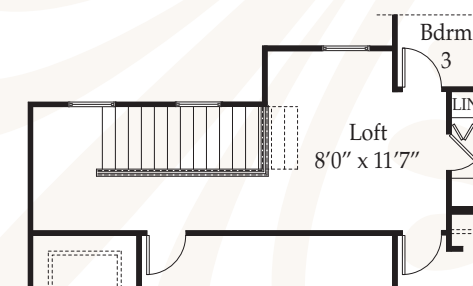
First Floor Plan Elevation C



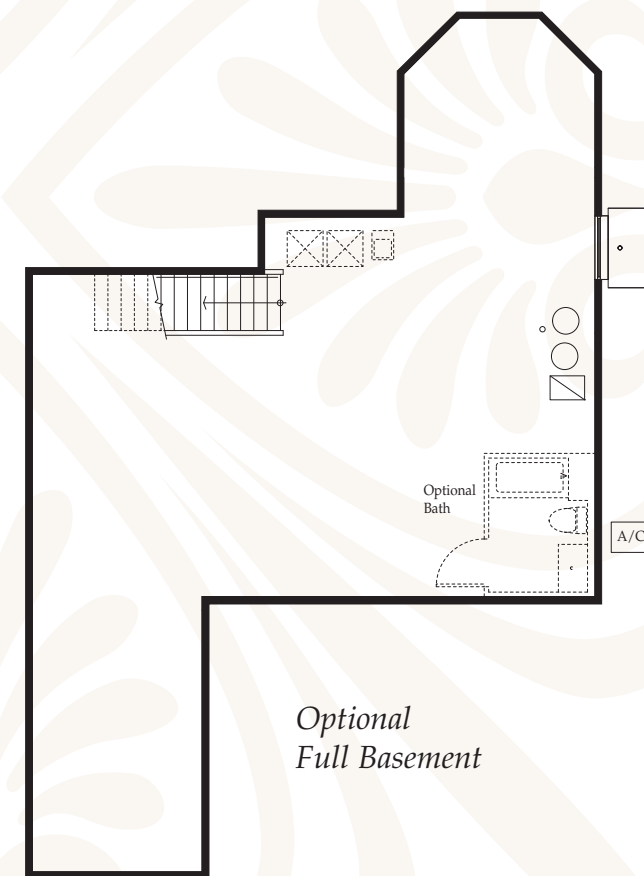
Second Floor Plan Elevation B



Second Floor Plan Elevation C



Optional Loft

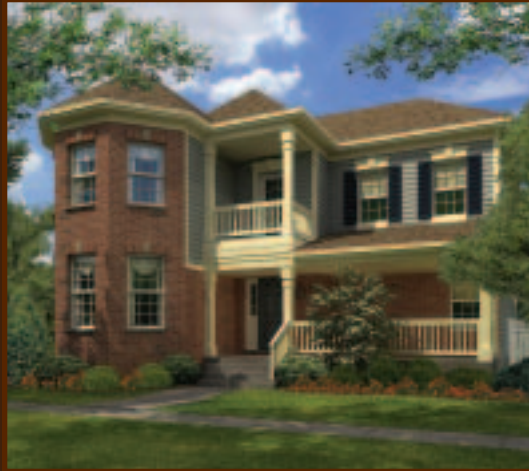


Optional Full Basement

*elevation A*



*elevation B*



*elevation C*



Enjoy your morning coffee in the sunny bump-out breakfast nook positioned in the front of this gracious three-bedroom home that offers an exceptionally open floor plan. A convenient serving counter is all that separates the large kitchen with a large breakfast area from the combined dining room and family room that expands across the back of the house and opens directly to the private garden. The absence of interior walls allows you to extend your dining room table into the family room for large gatherings. The second floor includes the open space above the foyer that can remain open or be used to expand living space as a cozy loft. The master bedroom suite has optional volume ceilings and two additional bedrooms are served by a hall bath.

## The Berkshire

2,398 sq.ft.  
3 bedrooms ~ 2-1/2 baths  
attached 2-3 car garage  
private garden



The KINGSTON Single-Family Homes Series