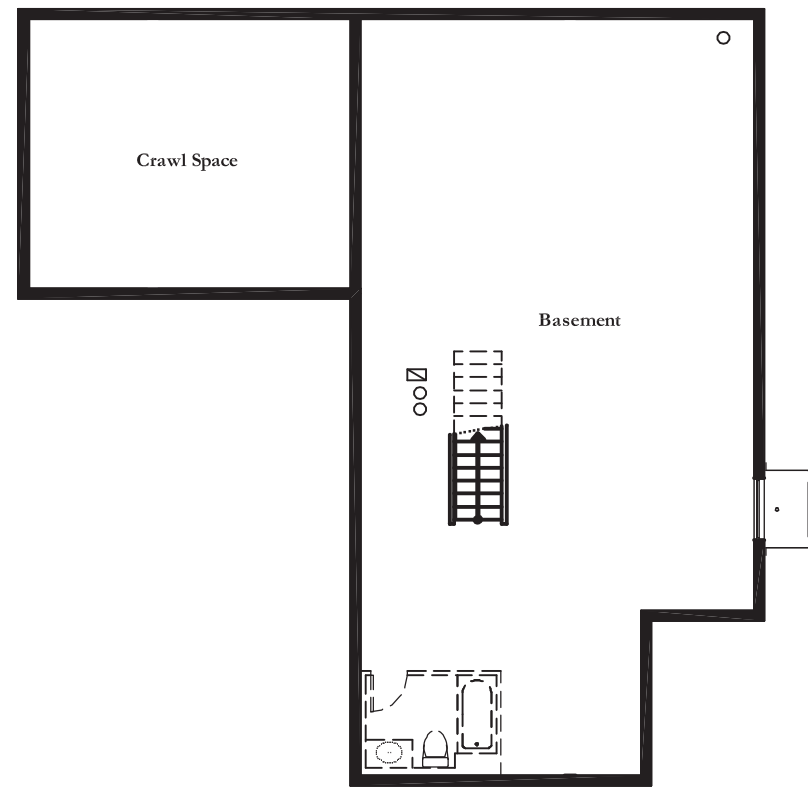
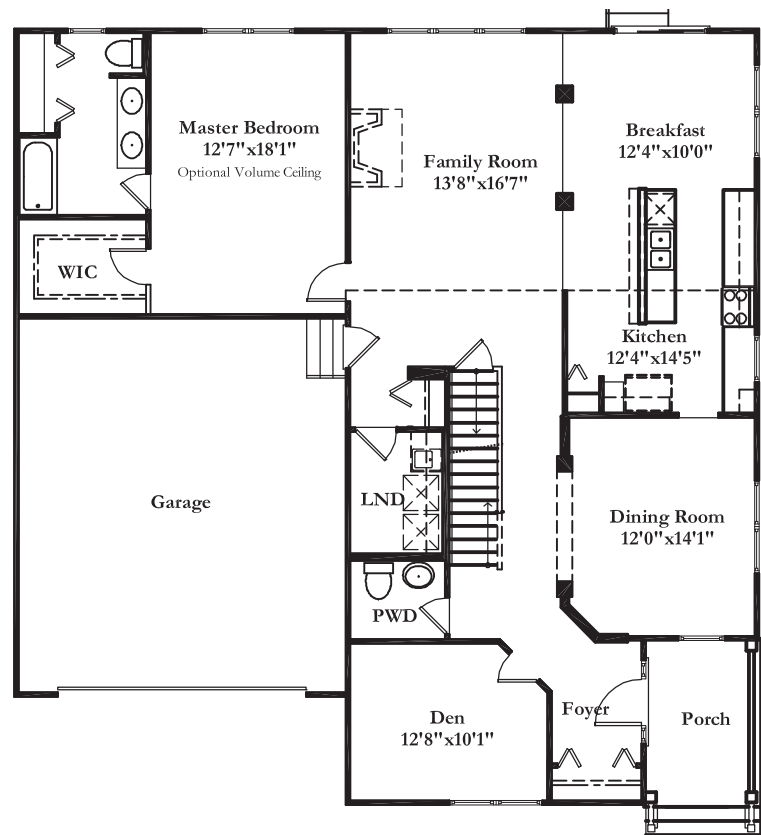


Second Floor



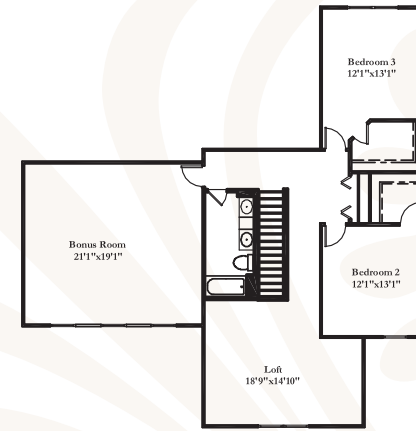
Basement w/ Crawl Space



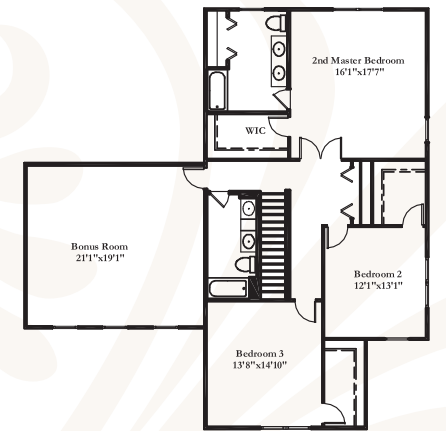
First Floor

The Foxwood

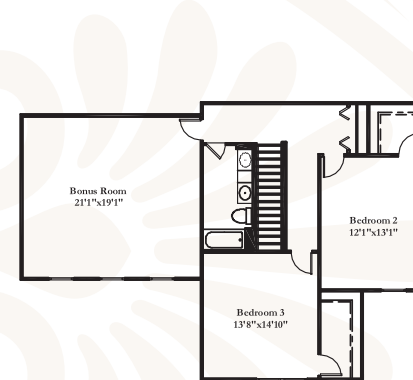
West Point Possibilities



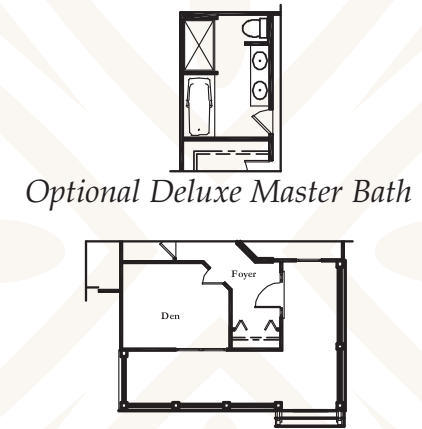
Optional Bonus Room w/ Loft



Optional Bonus Room w/ 2nd Master Bedroom

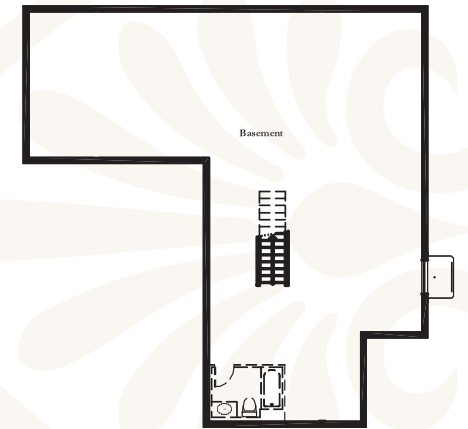


Optional Bonus Room

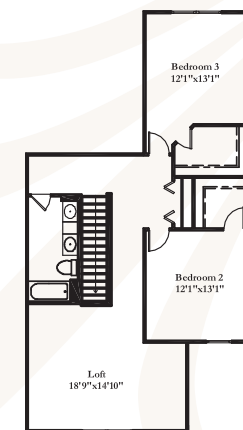


Optional Deluxe Master Bath

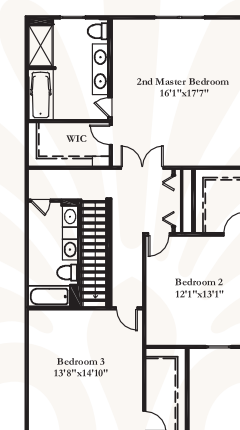
Optional Extended Porch



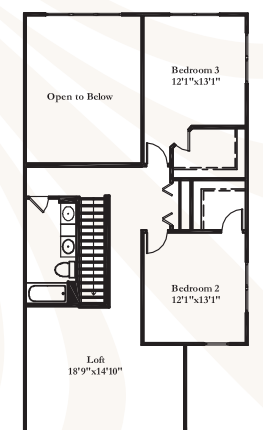
Optional Full Basement



Optional Loft



Optional 2nd Master Bedroom w/ Optional Master Bath



Optional Loft w/ 2-story Family Room

standard elevation



elevation A



elevation B



All the space you need just where you need it. A gracious front porch welcomes your guests, and the front-facing den is perfect for a home based business where your clients can visit. The large formal dining room will host your holiday dinners, and an expansive family room that opens to the kitchen and breakfast room functions well for casual living. The Master Suite is conveniently located on the first floor, and boasts a generous walk-in closet, and private bath featuring double bowl vanities that make getting ready in the morning a snap! There are two huge bedrooms on the second floor, each with its own walk-in closet! Customize your home with a second master suite upstairs, an enormous bonus room, perfect for a home theater, or a loft space- to make this home uniquely your own!

The Foxwood

*2,419 sq.ft.
3 bedrooms ~ 2-1/2 baths
(first floor master suite)
partial basement
2-3 car garage
private garden*



The CLASSIC Single-Family Homes Series