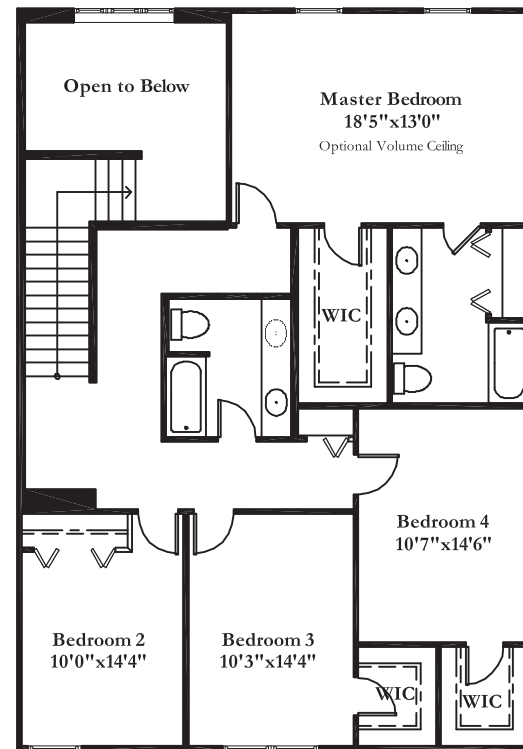
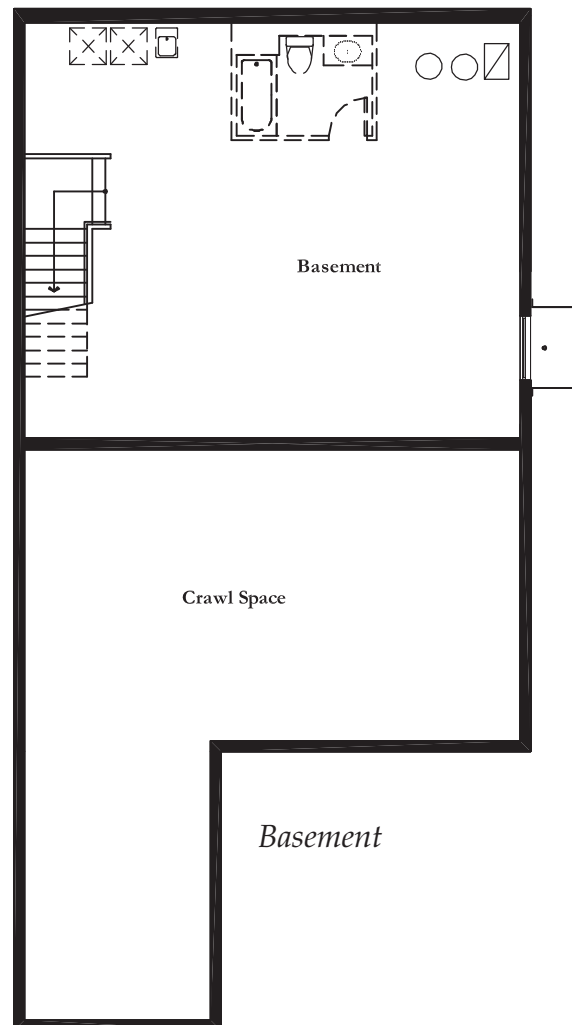


First Floor



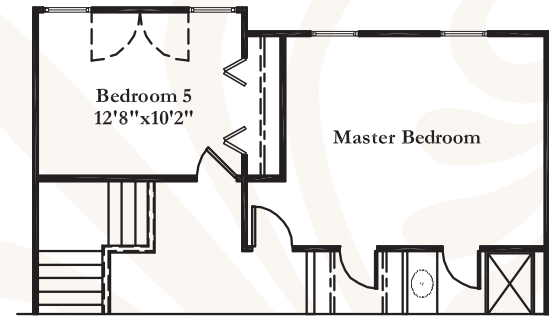
Second Floor



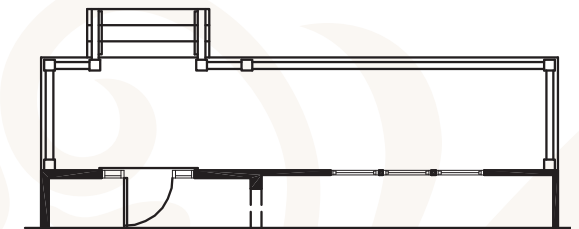
Basement

# The Manchester

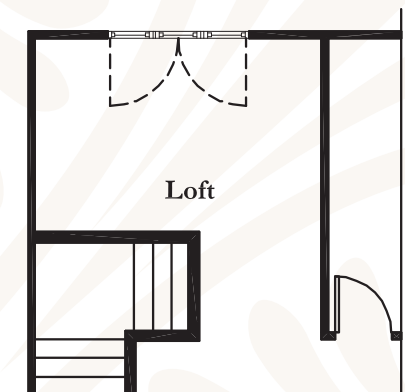
West Point Possibilities



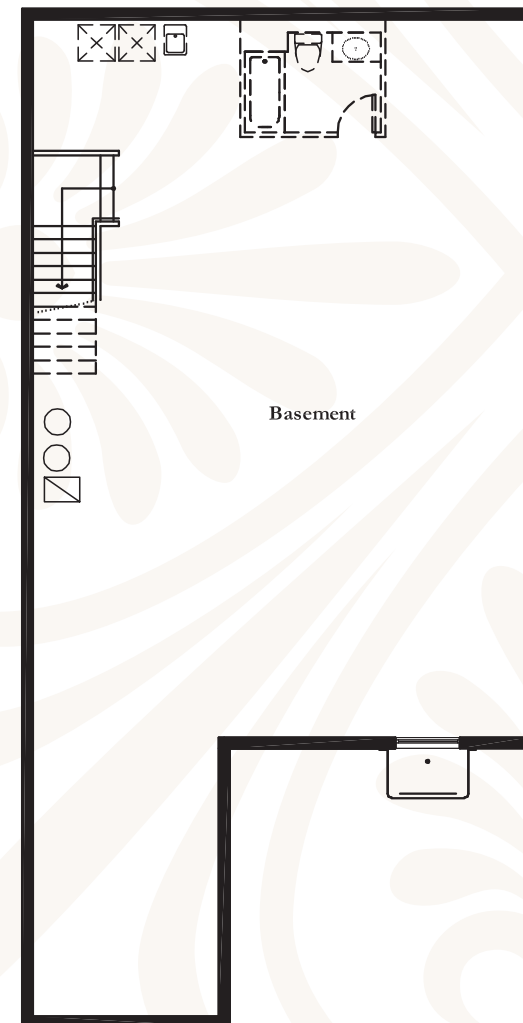
Optional Bedroom 5



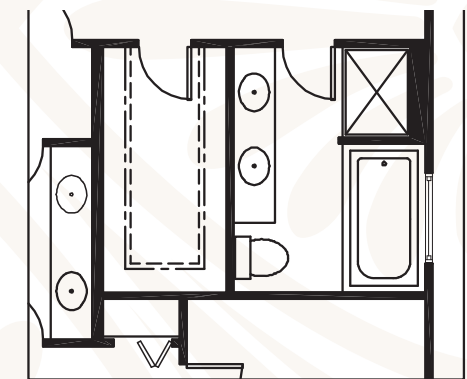
Optional Extended Porch



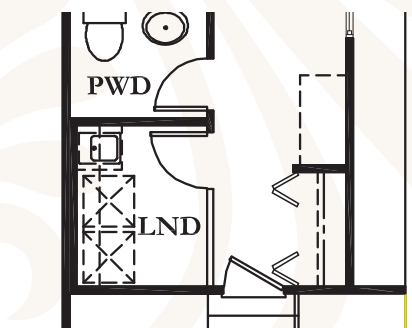
Optional Loft



Optional Full Basement



Optional Master Bath



Optional Laundry

*elevation A*



*elevation B*



*elevation C*



*This family-sized four to five bedroom house reprises the charm of a bygone era with a covered front porch. The exterior is traditional, but the open floor plan is as contemporary as tomorrow with interior space defined by columns and space enhancing half walls. This home features a blended living room and dining room and combined family and kitchen with large island that expands across the back of the house and overlooks the private garden. The spacious master bedroom offers a quiet getaway. There are three additional bedrooms plus the possibility for a fifth in the open space overlooking the foyer or you may want an office, exercise room, library- you decide.*

## *The Manchester*

*3,264 sq.ft.  
4-5 bedrooms ~ 2-1/2 baths  
attached 2-3 car garage  
private garden*



*The KINGSTON Single-Family Homes Series*