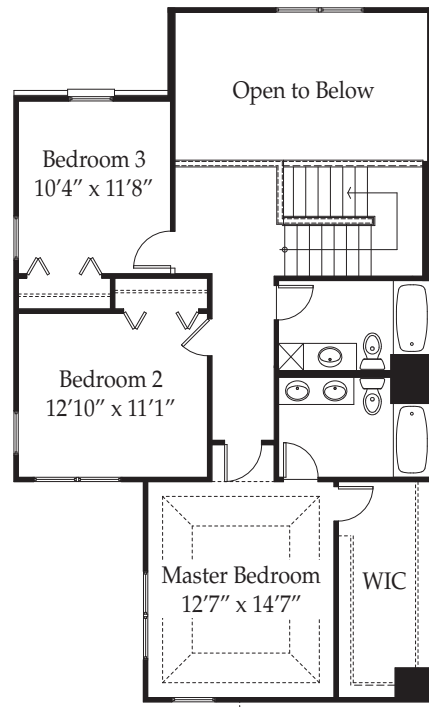
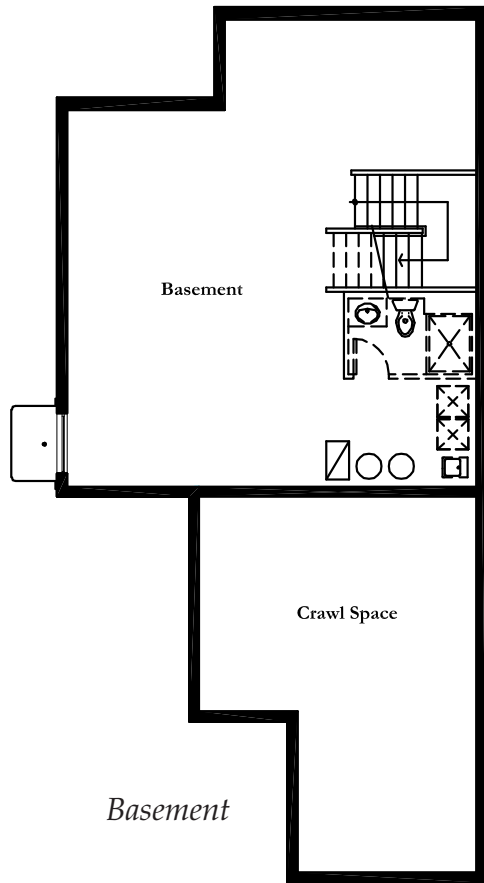


First Floor



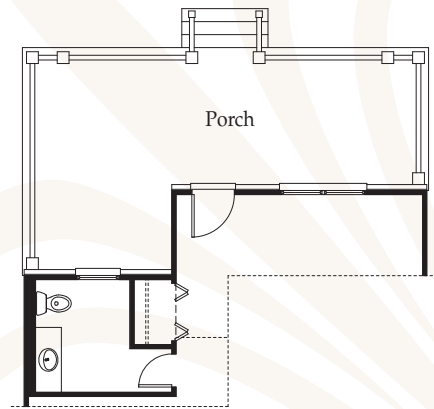
Second Floor



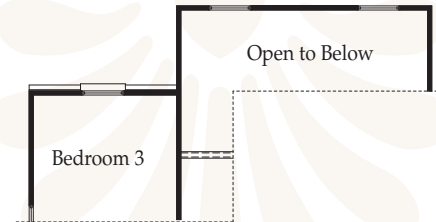
Basement

# The Middlebury

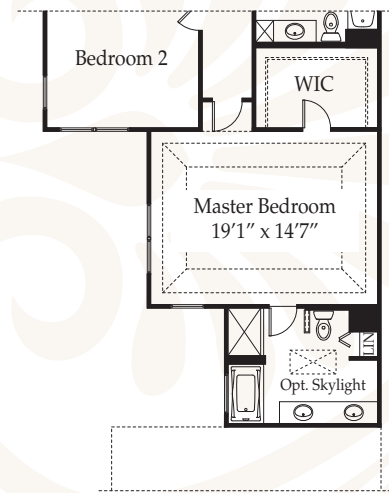
West Point Possibilities



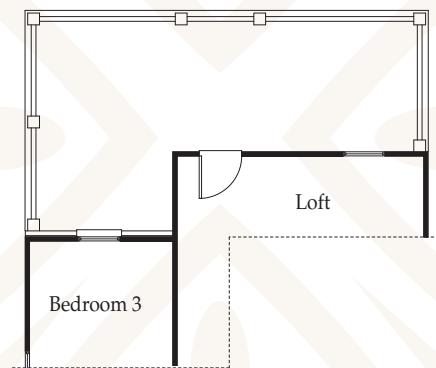
First Floor Plan Elevation B & C



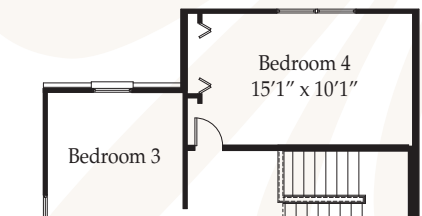
Second Floor Plan Elevation B



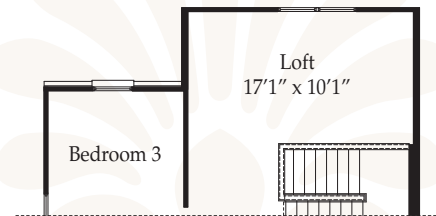
Optional Deluxe Master Suite



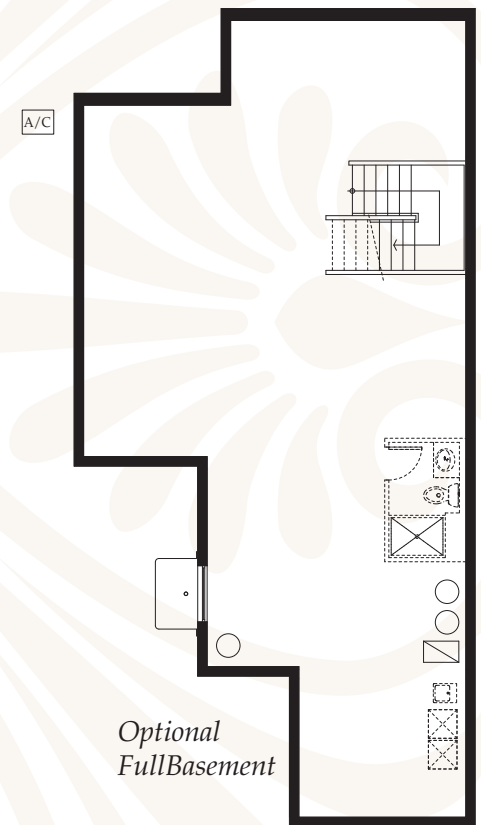
Second Floor Plan Elevation C



Optional Bedroom 4



Optional Loft



Optional Full Basement

*elevation A*



*elevation B*



*elevation C*



*Space is defined by function rather than walls in this well-proportioned three to four bedroom model. An open floor plan allows an easy flow of traffic from the formal living room into the family room, the perfect place that is expansive enough for entertaining and for the family to gather. Watch the seasons change in your private garden from the vantage point of the large breakfast area in the well-designed kitchen. The second floor includes a large master bedroom that has an option for a deluxe bath plus two secondary bedrooms. The second floor can be expanded by converting the large open space overlooking the living room into a quiet reading space, computer room or a fourth bedroom based on your family's needs.*

## *The Middlebury*

*2,167 sq.ft.  
3 bedrooms ~ 2-1/2 baths  
attached 2-3 car garage  
private garden*



*The HERITAGE Single-Family Homes Series*