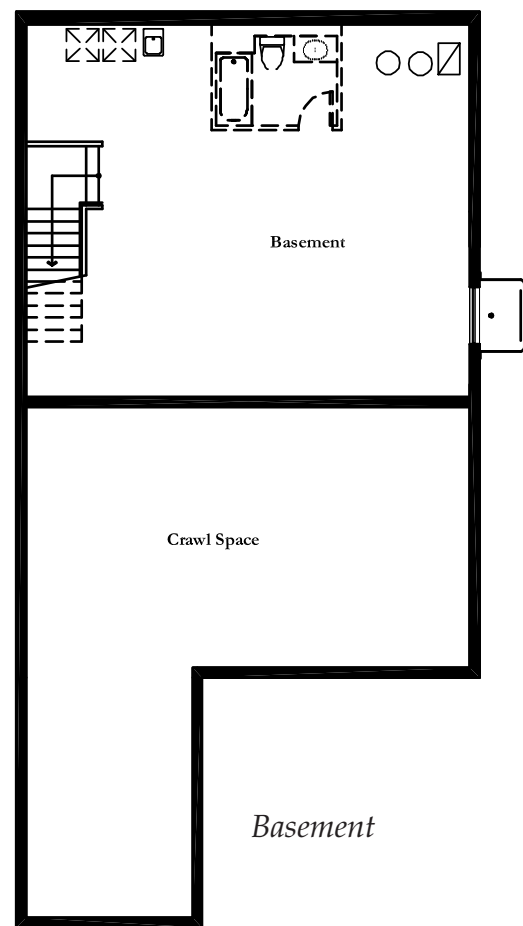




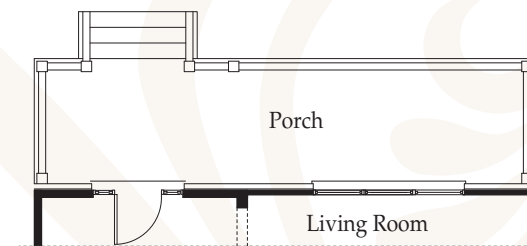
First Floor



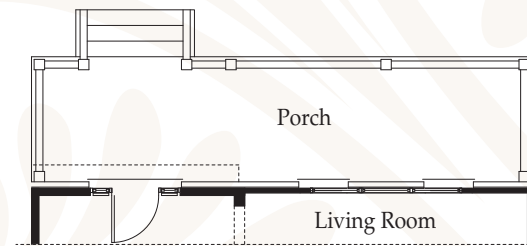
Basement

The Templeton

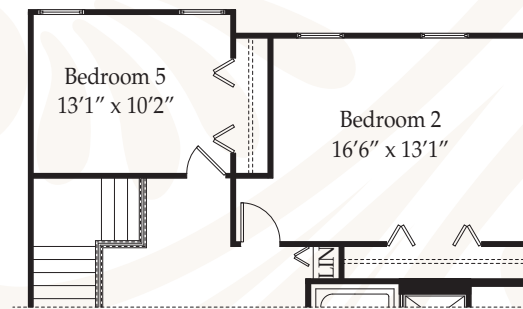
West Point Possibilities



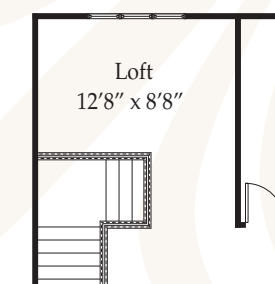
First Floor Plan Elevation B



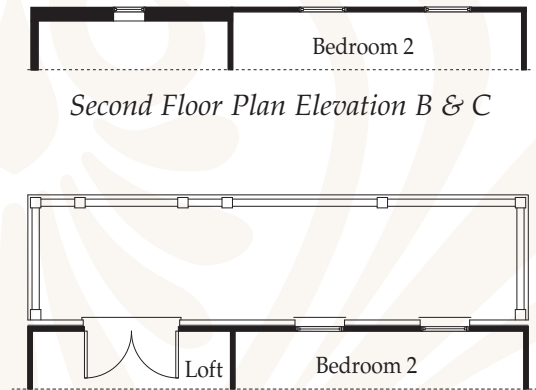
First Floor Plan Elevation C



Optional Bedroom 5

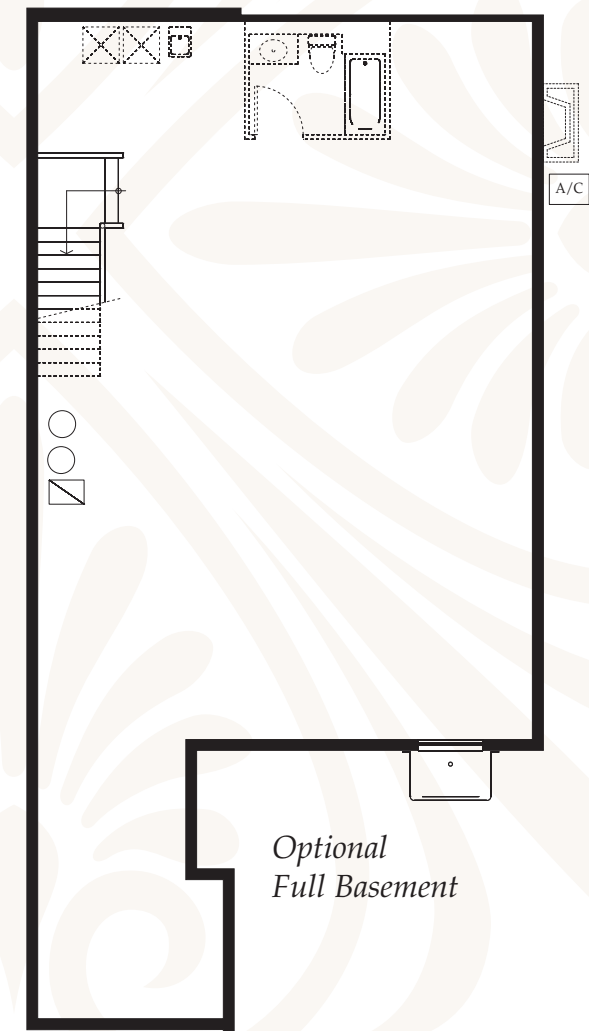


Optional Loft



Second Floor Plan Elevation B & C

Elevation C Loft Location



Optional Full Basement

elevation A



elevation B



elevation C



This family-sized four to five bedroom house reprises the charm of a bygone era with a covered front porch and Porte coche that shields guests from inclement weather and leads to a side load garage tucked in the back of the home. The exterior is traditional, but the open floor plan is as contemporary as tomorrow with interior space defined by columns and space enhancing half walls. This home features a blended living room and dining room and combined family and kitchen with large island that expands across the back of the house and overlooks the private garden. The spacious master bedroom offers a quiet getaway. There are three additional bedrooms plus the possibility for a fifth in the open space overlooking the foyer or you may want an office, exercise room, library- you decide.

The Templeton

*3,264 sq.ft.
4-5 bedrooms ~ 2-1/2 baths
attached 2-3 car garage
private garden*



The KINGSTON Single-Family Homes Series